

INTRODUZIONE AL SOFTWARE JASP PER L'ANALISI DEI DATI

AA 2019/2020

PROF. V.P. SENESE

Questi materiali sono disponibili per tutti gli studenti al seguente indirizzo:

http://psiclab.altervista.org/TecnAnDat2020/2019_2020.html

Università della Campania "Luigi Vanvitelli" – Dipartimento di Psicologia – TECNICHE DI ANALISI DEI DATI – © Prof. V.P. Senese

SOFTWARE FREE



SOFTWARE NON-FREE

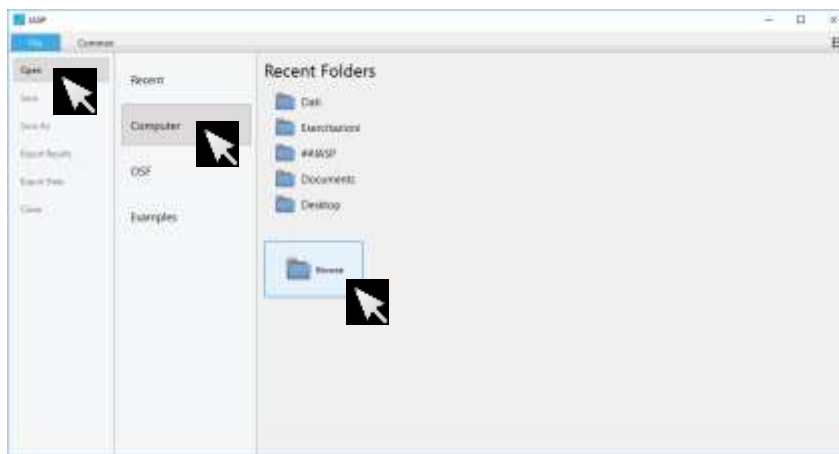


JASP



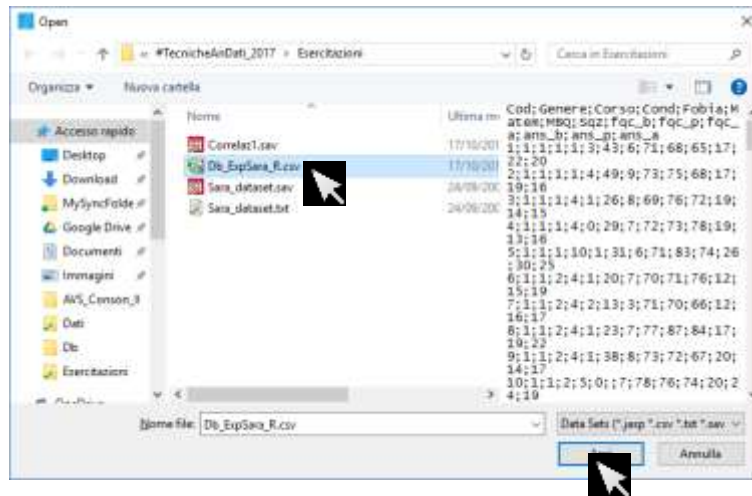
<https://jasp-stats.org/>

JASP



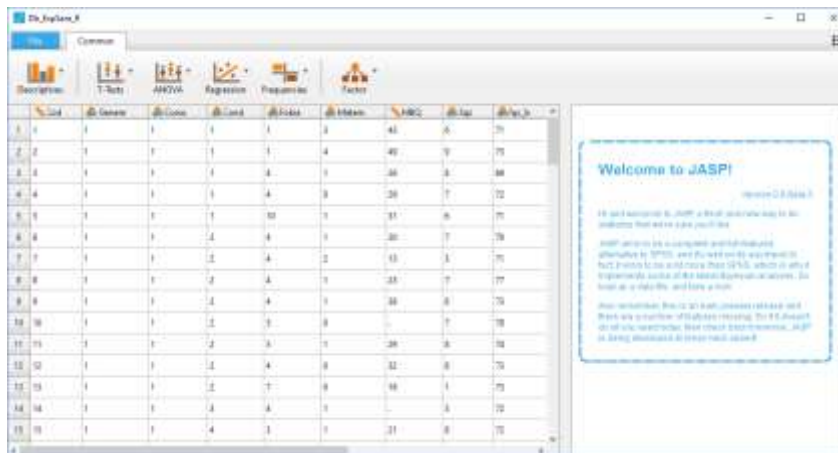
Nel menù **>File >Open**, selezionando **>Computer >Browse** è possibile indicare un db (soggetti x variabili) da importare per eseguire le analisi statistiche.

JASP



Il file (db) può essere in formato solo testo (delimitato da “,” o da “;” ovvero .txt e .csv), in formato SPSS (.sav), o in formato JASP (.jasp).

JASP



JASP

Db_ExpData_R

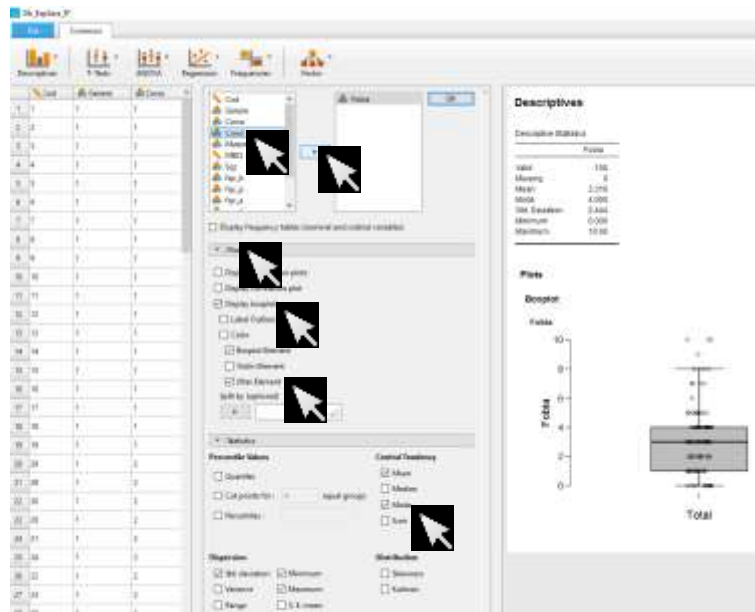
File Common

Descriptives T-Tests ANOVA Regression Frequencies Factor

Descriptive Statistics Reliability Analysis

| | Cond | Cont | Fobis | Matem |
|----|------|------|-------|-------|
| 2 | 1 | 1 | 1 | 4 |
| 3 | 1 | 1 | 4 | 1 |
| 4 | 1 | 1 | 4 | 0 |
| 5 | 1 | 1 | 10 | 1 |
| 6 | 1 | 2 | 4 | 1 |
| 7 | 1 | 2 | 4 | 2 |
| 8 | 1 | 2 | 4 | 1 |
| 9 | 1 | 2 | 4 | 1 |
| 10 | 1 | 2 | 5 | 0 |

JASP



JASP



A screenshot of the JASP software interface showing the 'Correlation Coefficients' dialog box and the 'Results' window. The dialog box has the following settings:

- Report significance
- Report significant correlations
- Confidence intervals
- Interval: 95
- Correlated
- Correlated positively
- Correlated negatively
- Correlation matrix
- Diagnostics for variables
- Selection

The 'Results' window displays the following 'Correlation Matrix':

| Correlation Matrix | | Fobia | Malen |
|--------------------|-----------------|-------|-----------|
| Fobia | Pearson's r | — | -0.488*** |
| | Spearman's rho | — | -0.488*** |
| | Kendall's tau B | — | -0.382*** |
| Malen | Pearson's r | — | — |
| | Spearman's rho | — | — |
| | Kendall's tau B | — | — |

***p < .001. **p < .01. *p < .05.